

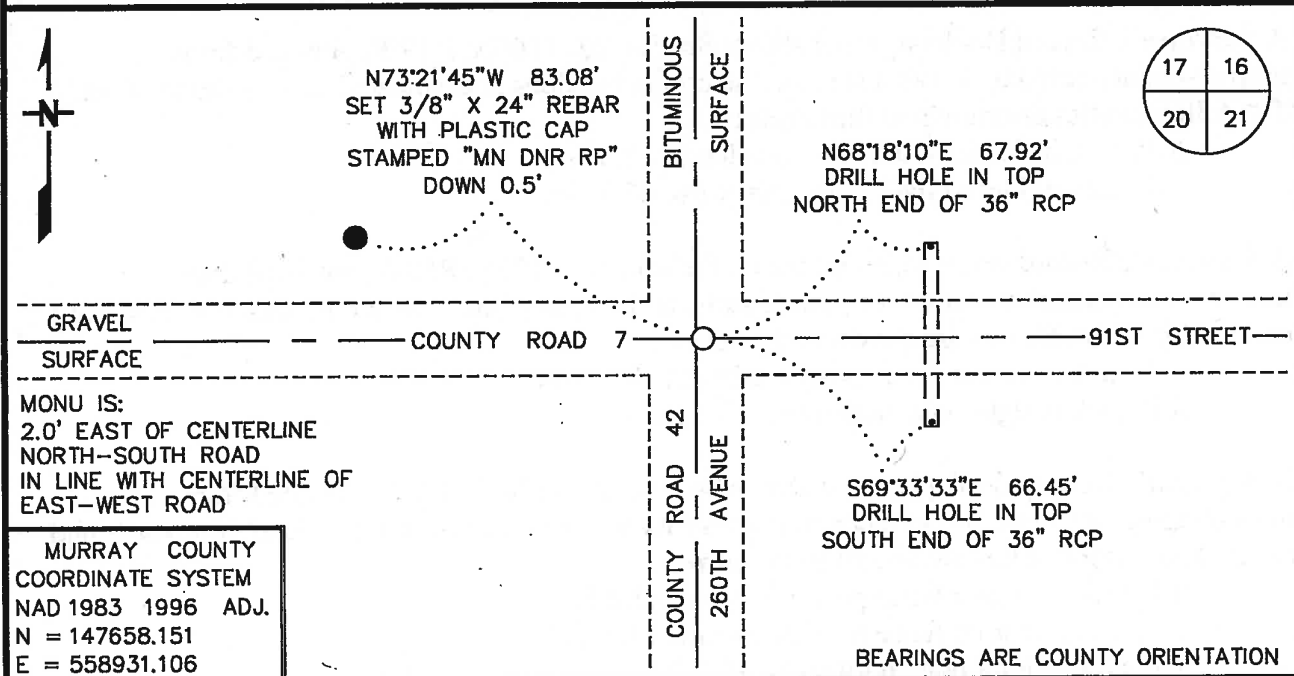
Index No. N-9

CERTIFICATE OF LOCATION OF GOVERNMENT CORNER

NORTHEAST Corner of Section 20, Township 106 N, Range 39 W
5TH Principal Meridian, State of Minnesota, County of MURRAY

At the corner location shown on the sketch:

- On 11/29/16 found a RAILROAD SPIKE, DOWN 1:0'
DATE
- left monument as found, lowered monument, removed monument (explain)
- On 11/29/16 Placed a 3/4" X 12" REBAR WITH PLASTIC CAP STAMPED
DATE
"MN DNR LS 17003", DOWN 0.7', IN PLACE OF FOUND RAILROAD SPIKE



Statement of evidence for this corner location is on back of this page.

FEBRUARY 2017
WMA00384

I hereby certify that this plan, specification, or report was prepared by me or under my direct supervision and that I am a duly Licensed Land Surveyor under the laws of the State of Minnesota.

SIGNATURE Bruce W. Shepherd
BRUCE W. SHEPHERD

DATE 3/23/17

License Number 17003

The DNR Division of Lands and Minerals contacted the following for survey information:

Website - mngeo.state.mn.us

Website - murray-countymn.com

Murray County Recorder's Office

Murray County Highway Department

Bueltel-Moseng Land Surveying, Inc. of Marshall

Zieske Land Surveying Inc. of Windom

Madsen Land Surveying Inc. of Fairmont

United States Department of the Interior Fish and Wildlife Service

- 1861 U.S. General Land Office notes, obtained from mngeo.state.mn.us, show the corner marked with a post and a charred stake in a raised mound with trench and pits as per instructions.
- 1908 Plat Books for Des Moines River Township, obtained from the County Recorder's Office, show
1926 roads east-west-north in the area of the corner, a property division is also shown to the south.
- 1913 June 24, A Surveyor's Record Book, page 233, by J.W. Woolstencroft, obtained from the County Recorder's Office, which is also on Website murray-countymn.com, shows corner but does not indicate what kind of monument was found or set. The following ties are shown to the corner:
telephone pole, southwest, 38 feet
fence corner, northeast, 43 feet
fence corner, southeast, 37.5 feet
- 1934 A Surveyor's Record Book page that shows Section 20, T106N, R39W, obtained from murray-countymn.com, shows a stone at the corner but does not indicate if it was found or set. The following ties are shown to the corner:
R.P. tack in blazed fence post, northeast, 37.3 feet
R.P. tack in blazed light pole, northwest, 47.9 feet
- 1940 A Surveyor's Record Book page that shows Section 21, T106N, R39W, obtained from murray-countymn.com, shows a concrete stone at the corner but does not indicate if it was found or set. The following ties are shown to the corner:
R.P. tack in corner fence post, southwest, 48.4 feet
R.P. tack in light pole, northwest, 57.1 feet
- 1940 A Surveyor's Record Book page that shows Section 20, T106N, R39W, obtained from murray-countymn.com, shows a concrete stone at the corner but does not indicate if it was found or set. The following ties are shown to the corner:
R.P. tack in corner fence post, northeast, 43.2 feet
R.P. tack in corner fence post, southeast, 45.9 feet
R.P. tack in light pole, northwest, 57.1 feet

- 1961 January, field notes for a survey in the NW¼ of Section 20, T106N, R39W, by the Department of Conservation, in the possession of the DNR Division of Lands and Minerals, states that a railroad spike was placed at the corner at the intersection of County roads north, south, east, and west. The following ties are shown to the corner:
- bottle cap in corner fence post, northeast, 64.34 feet
 - bottle cap in power pole, northwest, 83.38 feet
 - bottle cap in power pole, southeast, 62.30 feet
- The corner is shown:
- 2651.2 feet from the east quarter corner of Section 20
 - 2685.4 feet from the north quarter corner of Section 20
- 1972 March 24, A Surveyor's Record Book page that shows Section 20, T106N, R39W, obtained from murray-countymn.com, shows a concrete stone at the corner but does not indicate if it was found or set. The following ties are shown to the corner:
- R.P. tack in in telephone pole, southeast, 46.8 feet
 - R.P. tack in corner fence post, southwest, 49.2 feet
- No Construction Plan Sheet 7 of 36 for CSAH No 42, obtained from the County Highway
Date Department, shows a 2" by 2" hub over a concrete monument at the corner, but does not indicate if they were found or set. The corner is shown:
- at Station 316+92.6
 - at the intersection of the center line of roads north-south-east-west
- 2015 October 14, a sketch of a survey in Section 17, T106N, R39W, obtained from Bueltel-Moseng Land Surveying Inc. states that a PK nail was found at the corner. The corner is shown:
- 2683.53 feet from the north quarter corner of Section 20
- 2016 November 29, the DNR Division of Lands and Minerals found a railroad spike down 1 foot at the corner. The railroad spike was removed and the area was scanned with an electronic metal detector but no metal attraction was obtained. Searched for but found no evidence of the record ties. The area below the railroad spike was probed but was unable to probe real deep due to solid gravel. Were unable to excavate any further for the record monument because the County Highway Engineer did not want the bituminous road surface torn up/degraded. The found railroad spike was found to be:
- 1 foot east of the center line of CSAH No 42
 - in line with center line of road east
 - in line with center line of road west
 - 2651.50 feet from the east quarter corner of Section 20
 - 2683.51 feet from the north quarter corner of Section 20

Analysis of the above information led the DNR Division of Lands and Minerals to conclude that the found railroad spike marks the best evidence of the location of the corner. A ¾ inch by 12 inch rebar with a plastic cap stamped "MN DNR LS 17003" was set in place of the found railroad spike and ties were taken to it as shown on the sketch of reference ties. The found railroad spike was discarded.

**THIS CORNER LOCATION NEEDS TO BE EXCAVATED
to search for the record concrete stone**